



ON HOLLAND



FREEHOLD



SITE PLAN

FOREST BY THE HILL

- 1 Arrival Court
- 2 Arrival Drop-off (Basement 1)
- 3 Arrival Lobby (Basement 1)
- 4 Clubhouse
- 5 Club Lounge
- 6 Club Fitness
- 7 Changing Rooms
- 8 Veranda
- 9 Gourmet Pavilion
- 10 Water Cascade
- 11 Green Cascade

THE SHIRE

- 12 Grand Lawn
- 13 Garden Creek
- 14 Lily Pergola
- 15 Reed Pergola

THE LAGOON

- 16 Lake Pool
- 17 Wet Deck
- 18 Spa Pool
- 19 Pool Deck

PLAY SPACE

- 20 Play Pool
- 21 Play Deck
- 22 Freeform Play
- 23 Junior Play

CANOPY PARK

- 24 Garden Patio
- 25 Reflexology Path
- 26 Garden Terrace
- 27 Social Terrace

GARDEN COLLECTION

- 28 Variegated Garden
- 29 Palm Garden
- 30 Hardwood Garden
- 31 Fern Garden
- 32 Floral Garden
- 33 Sunken Garden

WELLNESS ZONE

- 34 Wellness Pavilion
- 35 Sprint Track

MISCELLANEOUS

- 36 Pedestrian Gate
- 37 Management Office (Basement 1)
- 38 Guard House (Basement 1)
- 39 Bin Centre
- 40 Substation (Basement 1)
- 41 Genset



UNIT DISTRIBUTION



89 Holland Road

Unit Storey	1	2	3	4	5	6	7	8	9
12	C2	B2	B2	C2	C1	A1	B1	A2	C1
11	C2	B2	B2	C2	C1	A1	B1	A2	C1
10	C2	B2	B2	C2	C1	A1	B1	A2	C1
9	C2	B2	B2	C2	C1	A1	B1	A2	C1
8	C2	B2	B2	C2	C1	A1	B1	A2	C1
7	C2	B2	B2	C2	C1	A1	B1	A2	C1
6	C2	B2	B2	C2	C1	A1	B1	A2	C1
5	C2	B2	B2	C2	C1	A1	B1	A2	C1
4	C2	B2	B2	C2	C1	A1	B1	A2	C1
3	C2	B2	B2	C2	C1	A1	B1	A2	C1
2	C2	B2	B2	C2	C1	A1	B1	A2	C1

95 Holland Road

Unit Storey	18	19	20	21
12	E	F	D1	D1
11	E	F	D1	D1
10	E	F	D1	D1
9	E	F	D1	D1
8	E	F	D1	D1
7	E	F	D1	D1
6	E	F	D1	D1
5	E	F	D1	D1
4	E	F	D1	D1
3	E	F	D1	D1
2	E	F	D1	D1

97 Holland Road

Unit Storey	22	23	24	25
12	F	E	D1	D1
11	F	E	D1	D1
10	F	E	D1	D1
9	F	E	D1	D1
8	F	E	D1	D1
7	F	E	D1	D1
6	F	E	D1	D1
5	F	E	D1	D1
4	F	E	D1	D1
3	F	E	D1	D1
2	F	E	D1	D1

91 Holland Road

Unit Storey	10	11	12	13
12	E	F	D1	D1
11	E	F	D1	D1
10	E	F	D1	D1
9	E	F	D1	D1
8	E	F	D1	D1
7	E	F	D1	D1
6	E	F	D1	D1
5	E	F	D1	D1
4	E	F	D1	D1
3	E	F	D1	D1
2	E	F	D1	D1

93 Holland Road

Unit Storey	14	15	16	17
12	E	F	D1	D1
11	E	F	D1	D1
10	E	F	D1	D1
9	E	F	D1	D1
8	E	F	D1	D1
7	E	F	D1	D1
6	E	F	D1	D1
5	E	F	D1	D1
4	E	F	D1	D1
3	E	F	D1	D1
2	E	F	D1	D1

99 Holland Road

Unit Storey	26	27	28	29
12	D3	D2	D1	D1
11	D3	D2	D1	D1
10	D3	D2	D1	D1
9	D3	D2	D1	D1
8	D3	D2	D1	D1
7	D3	D2	D1	D1
6	D3	D2	D1	D1
5	D3	D2	D1	D1
4	D3	D2	D1	D1
3	D3	D2	D1	D1
2	D3	D2	D1	D1

LEGEND

- 2-Bedroom Suite
A1 (570 sqft) A2 (570 sqft)
- 2-Bedroom Select
B1 (603 sqft) B2 (614 sqft)
- 2-Bedroom Classic
C1 (657 sqft) C2 (657 sqft)
- 2-Bedroom Deluxe
D1 (700 sqft) D2 (710 sqft) D3 (721 sqft)
- 3-Bedroom Deluxe
E (936 sqft)
- 3-Bedroom + Study Deluxe
F (1,055 sqft)

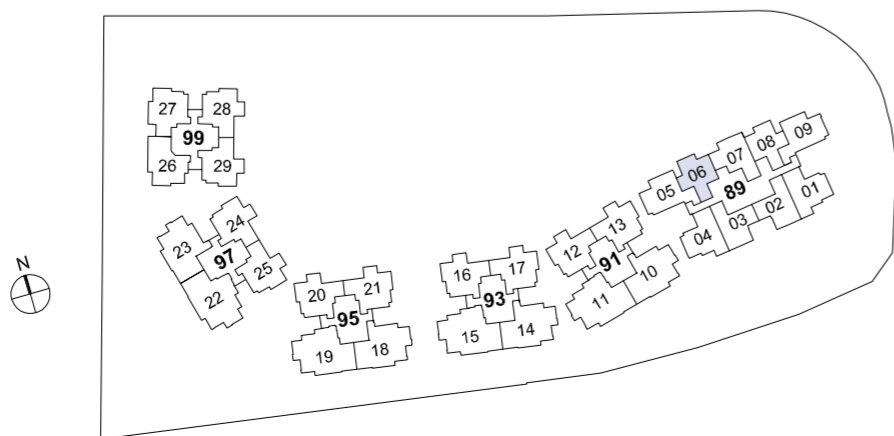
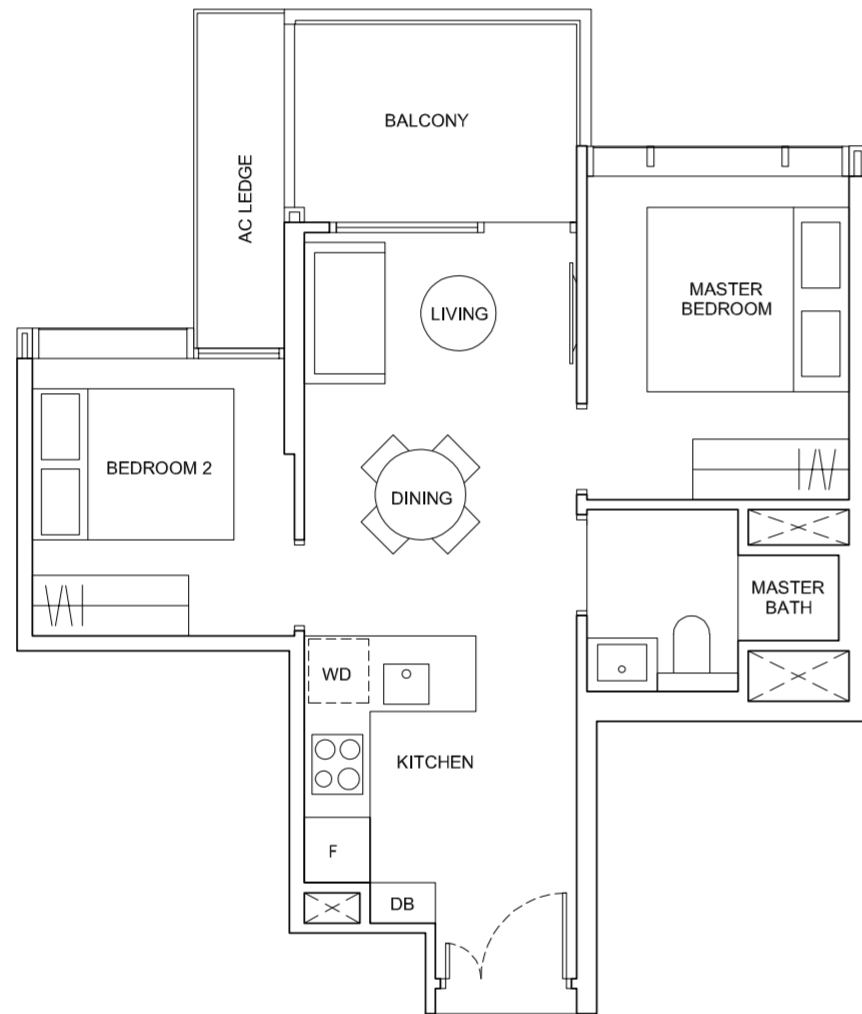


2 - BEDROOM SUITE

TYPE A1

53 sqm / 570 sqft

#02-06 to #12-06



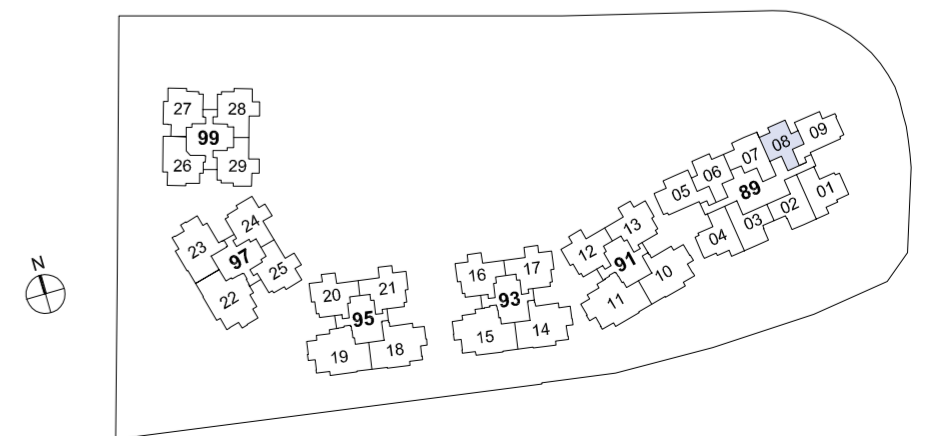
The plans are subjected to change as may required or approved by the relevant authorities. Areas are estimates only and subject to final survey. Plans are not drawn to scale and do not form part of the contract.

2 - BEDROOM SUITE

TYPE A2

53 sqm / 570 sqft

#02-08 to #12-08



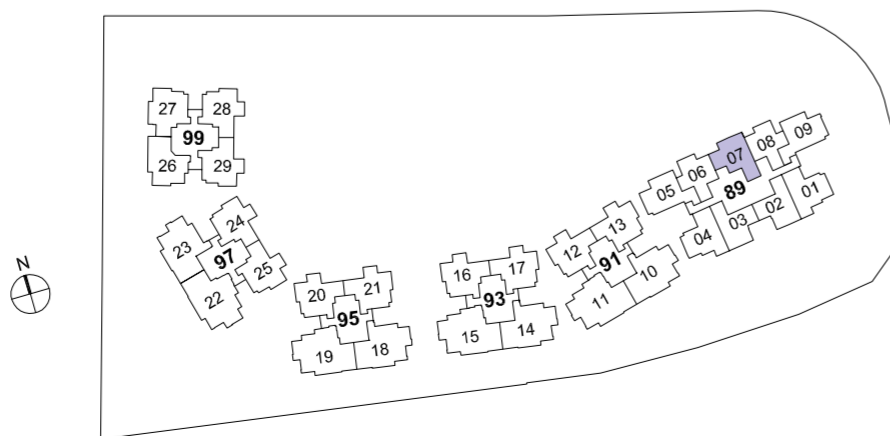
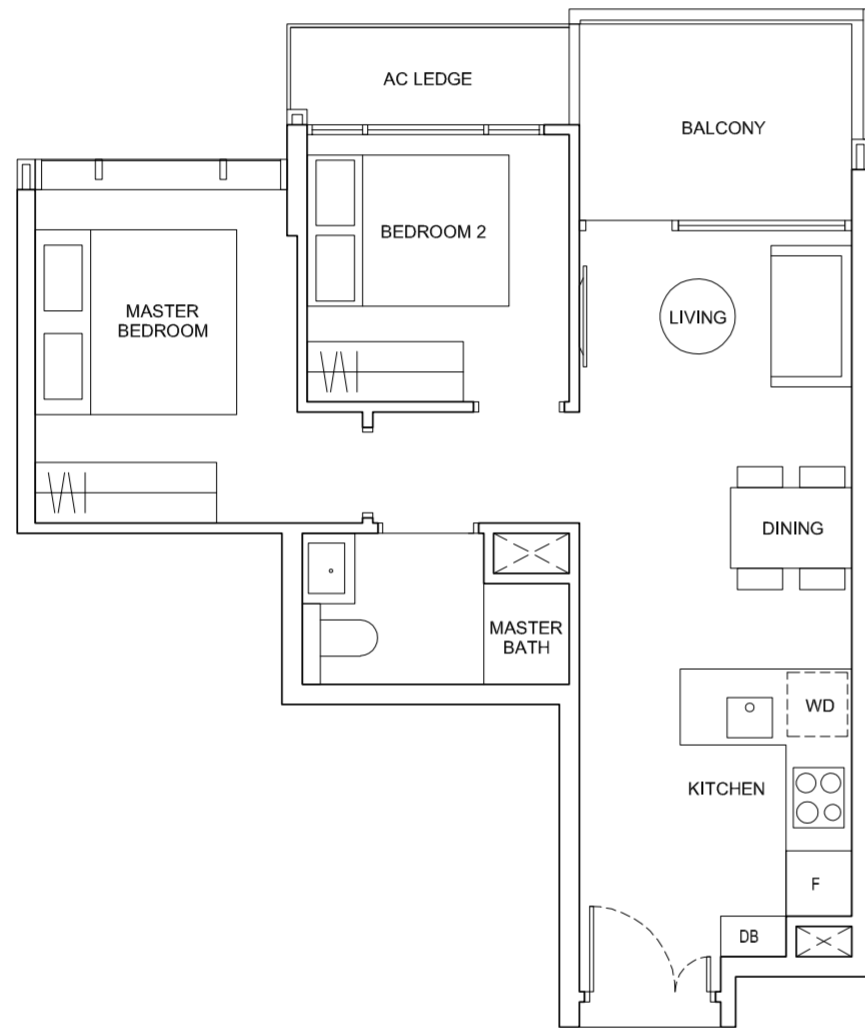
The plans are subjected to change as may required or approved by the relevant authorities. Areas are estimates only and subject to final survey. Plans are not drawn to scale and do not form part of the contract.

2 - BEDROOM SELECT

TYPE B1

56 sqm / 603 sqft

#02-07 to #12-07



The plans are subjected to change as may required or approved by the relevant authorities. Areas are estimates only and subject to final survey. Plans are not drawn to scale and do not form part of the contract.

2 - BEDROOM SELECT

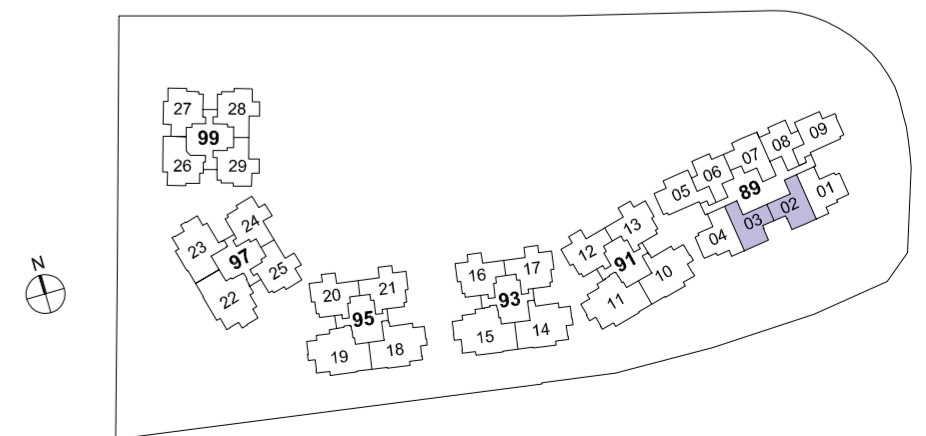
TYPE B2

57 sqm / 614 sqft

#02-02 to #12-02*

#02-03 to #12-03

* Mirror Unit



The plans are subjected to change as may required or approved by the relevant authorities. Areas are estimates only and subject to final survey. Plans are not drawn to scale and do not form part of the contract.

2 - BEDROOM CLASSIC

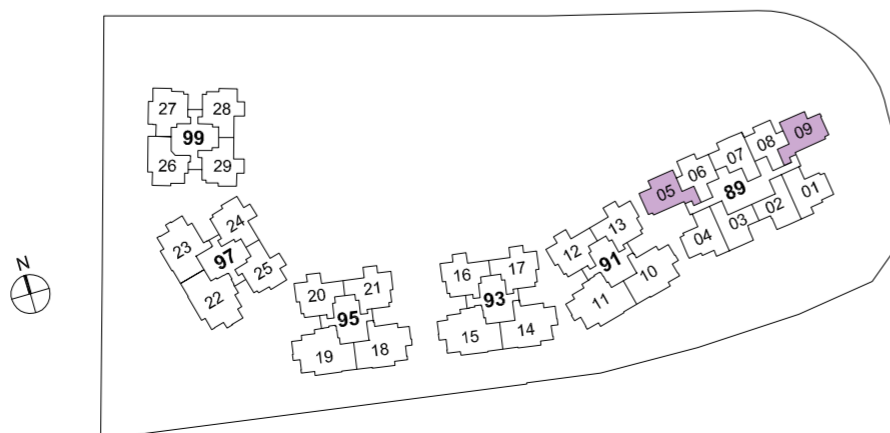
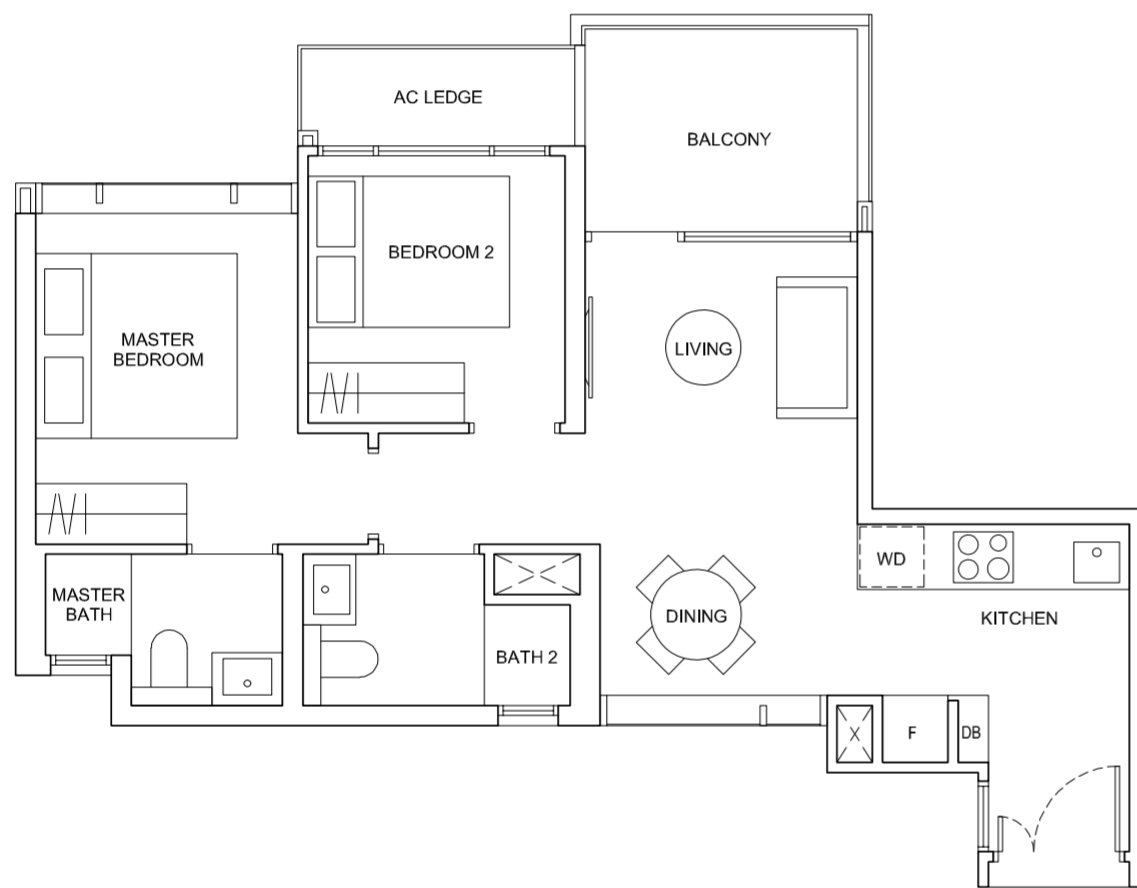
TYPE C1

61 sqm / 657 sqft

#02-05 to #12-05

#02-09 to #12-09*

* Mirror Unit



The plans are subjected to change as may required or approved by the relevant authorities. Areas are estimates only and subject to final survey. Plans are not drawn to scale and do not form part of the contract.

2 - BEDROOM CLASSIC

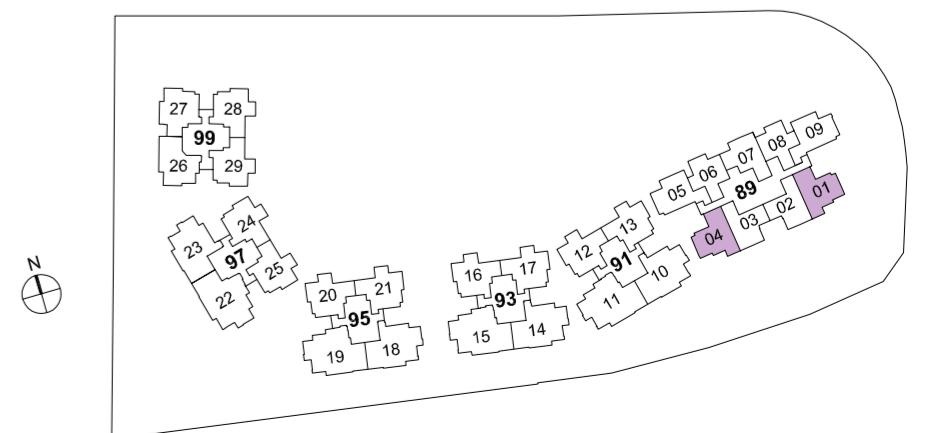
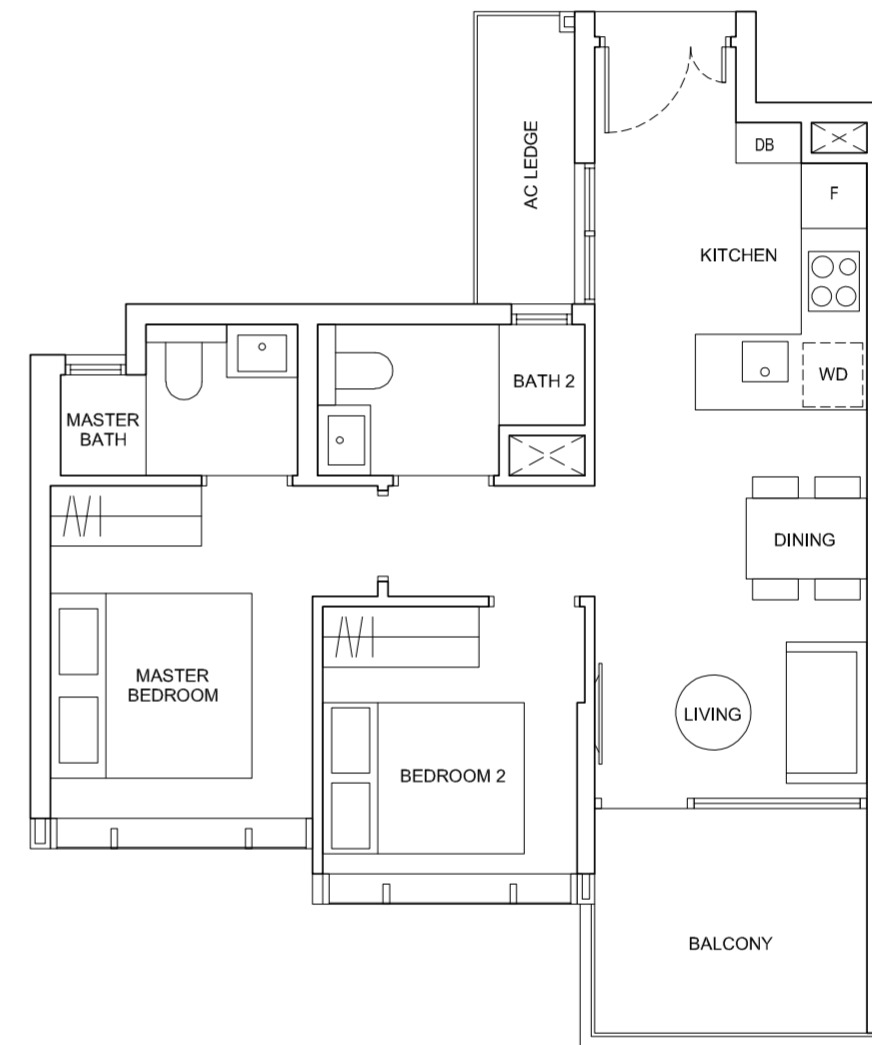
TYPE C2

61 sqm / 657 sqft

#02-01 to #12-01*

#02-04 to #12-04

* Mirror Unit



The plans are subjected to change as may required or approved by the relevant authorities. Areas are estimates only and subject to final survey. Plans are not drawn to scale and do not form part of the contract.

2 - BEDROOM DELUXE

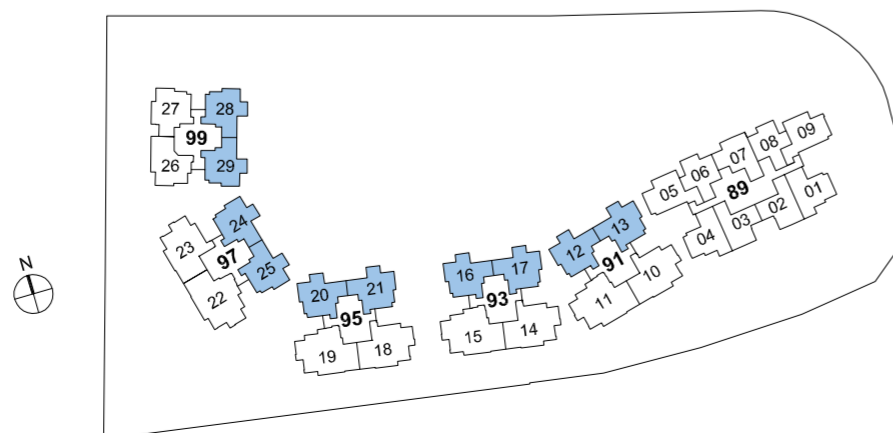
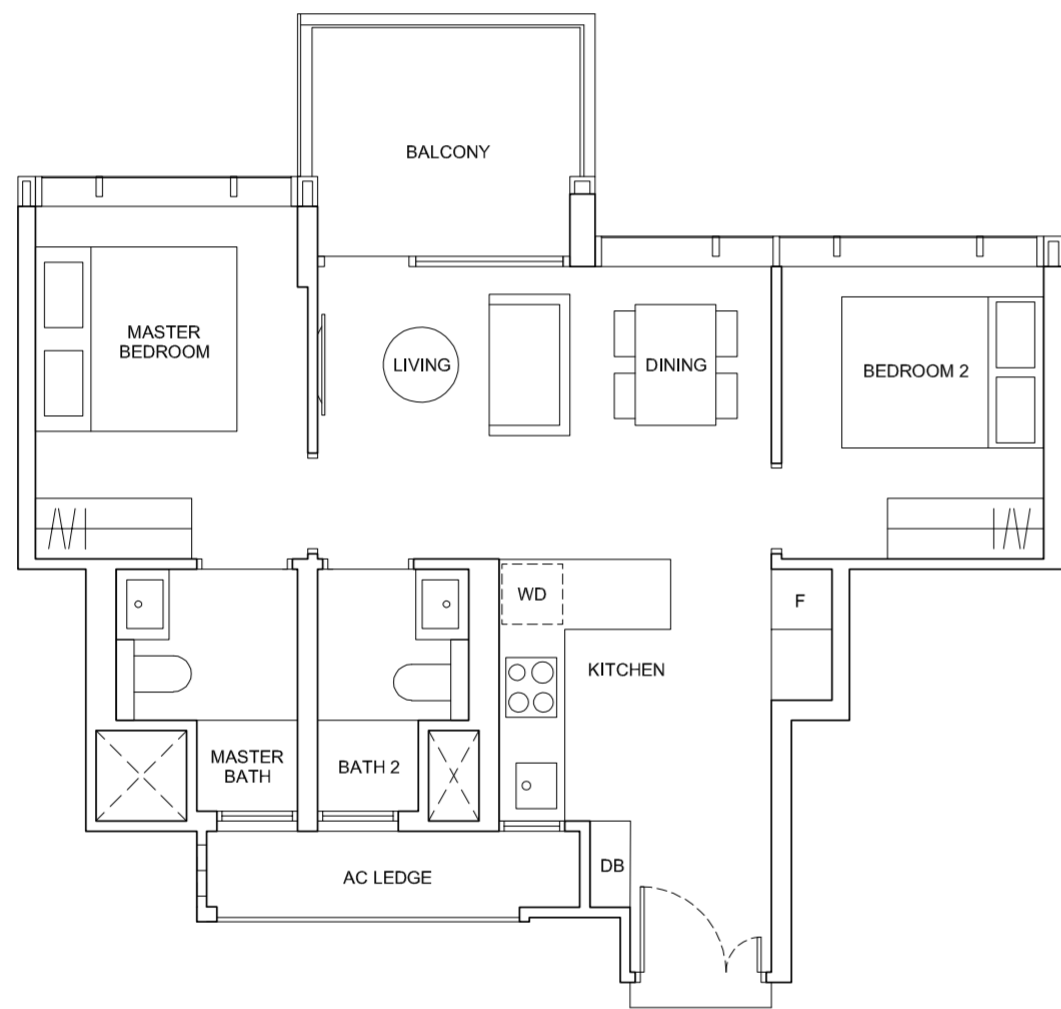
TYPE D1

65 sqm / 700 sqft

#02-12 to #12-12
 #02-13 to #12-13*
 #02-16 to #12-16
 #02-17 to #12-17*
 #02-20 to #12-20
 #02-21 to #12-21*

#02-24 to #12-24
 #02-25 to #12-25*
 #02-28 to #12-28
 #02-29 to #12-29*

* Mirror Unit



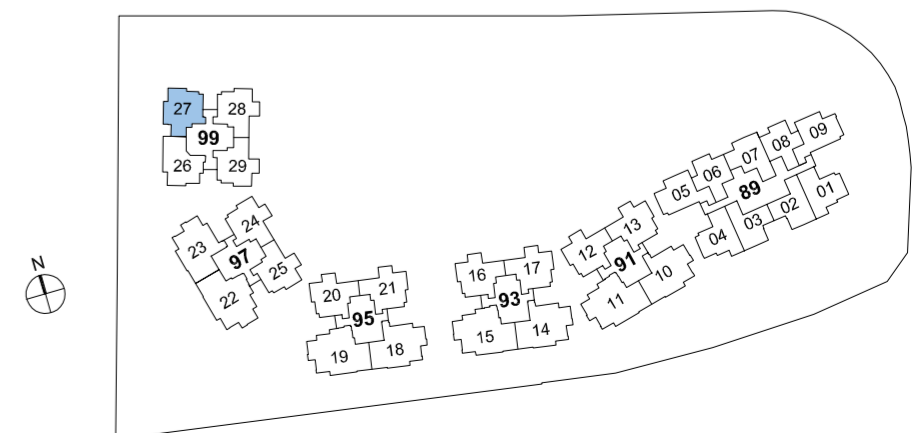
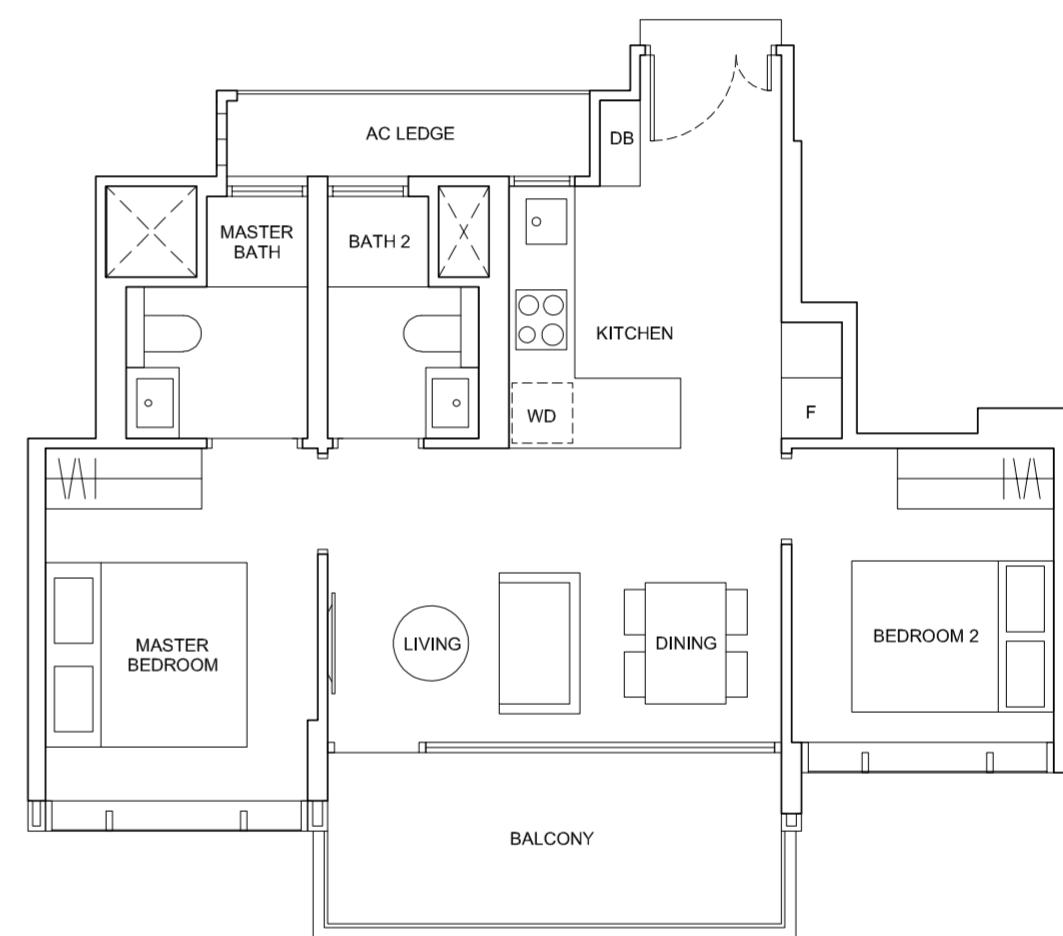
The plans are subjected to change as may required or approved by the relevant authorities. Areas are estimates only and subject to final survey. Plans are not drawn to scale and do not form part of the contract.

2 - BEDROOM DELUXE

TYPE D2

66 sqm / 710 sqft

#02-27 to #12-27



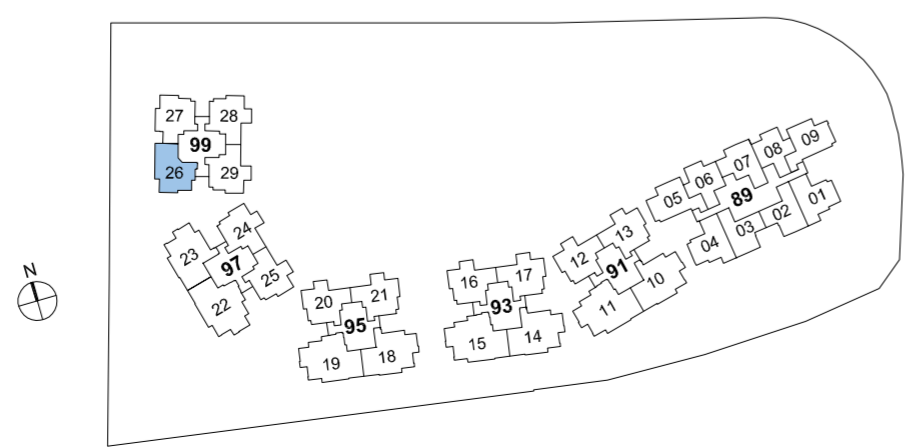
The plans are subjected to change as may required or approved by the relevant authorities. Areas are estimates only and subject to final survey. Plans are not drawn to scale and do not form part of the contract.

2 - BEDROOM DELUXE

TYPE D3

67 sqm / 721 sqft

#02-26 to #12-26



The plans are subjected to change as may required or approved by the relevant authorities. Areas are estimates only and subject to final survey. Plans are not drawn to scale and do not form part of the contract.

3 - BEDROOM DELUXE

TYPE E

87 sqm / 936 sqft

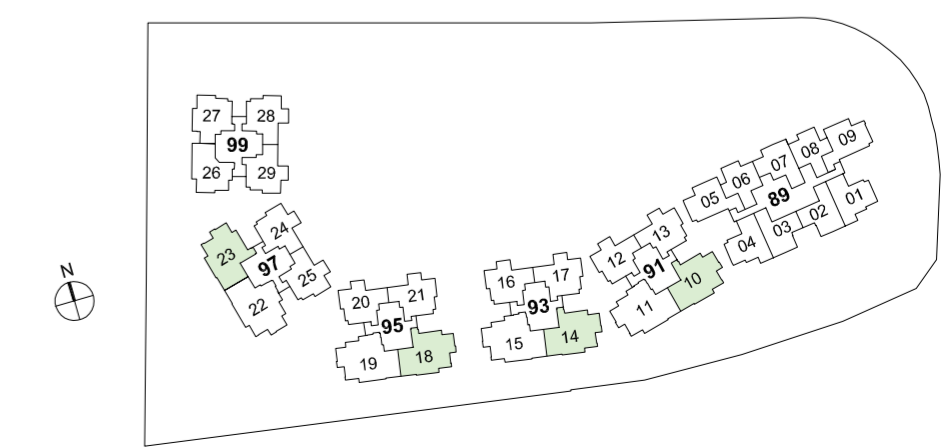
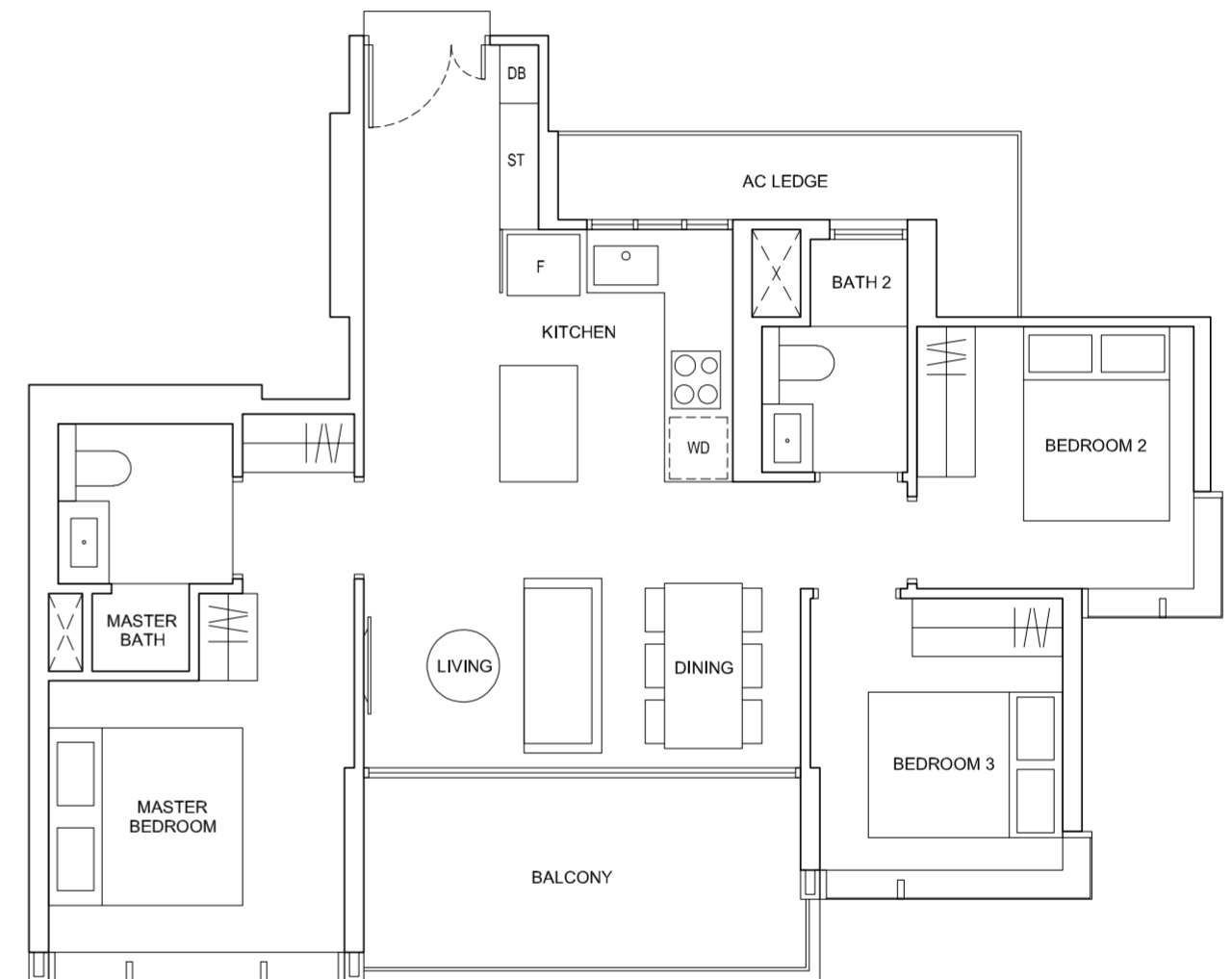
#02-10 to #12-10

#02-14 to #12-14

#02-18 to #12-18

#02-23 to #12-23*

* Mirror Unit



The plans are subjected to change as may required or approved by the relevant authorities. Areas are estimates only and subject to final survey. Plans are not drawn to scale and do not form part of the contract.

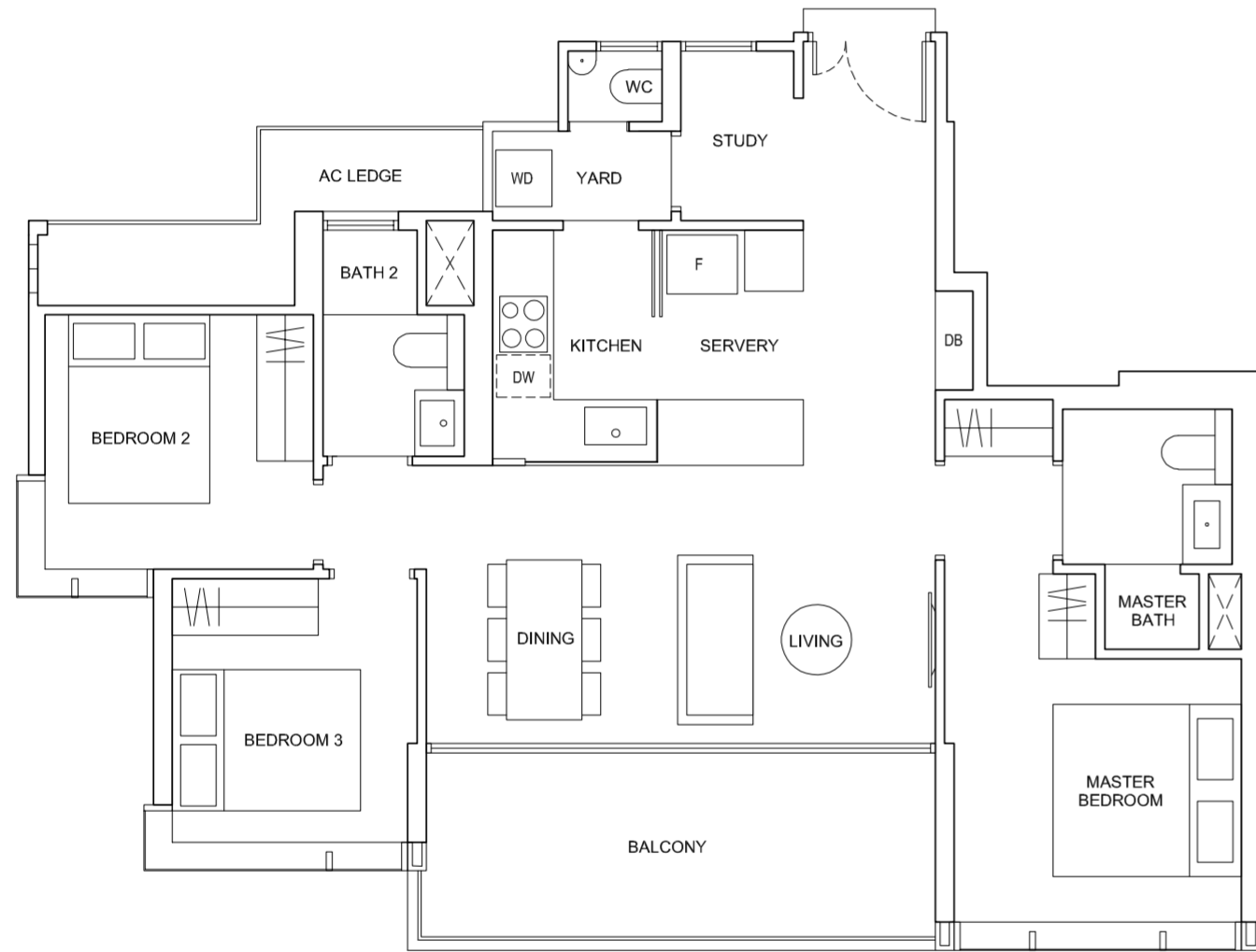
3 - BEDROOM + STUDY DELUXE

TYPE F

98 sqm / 1,055 sqft

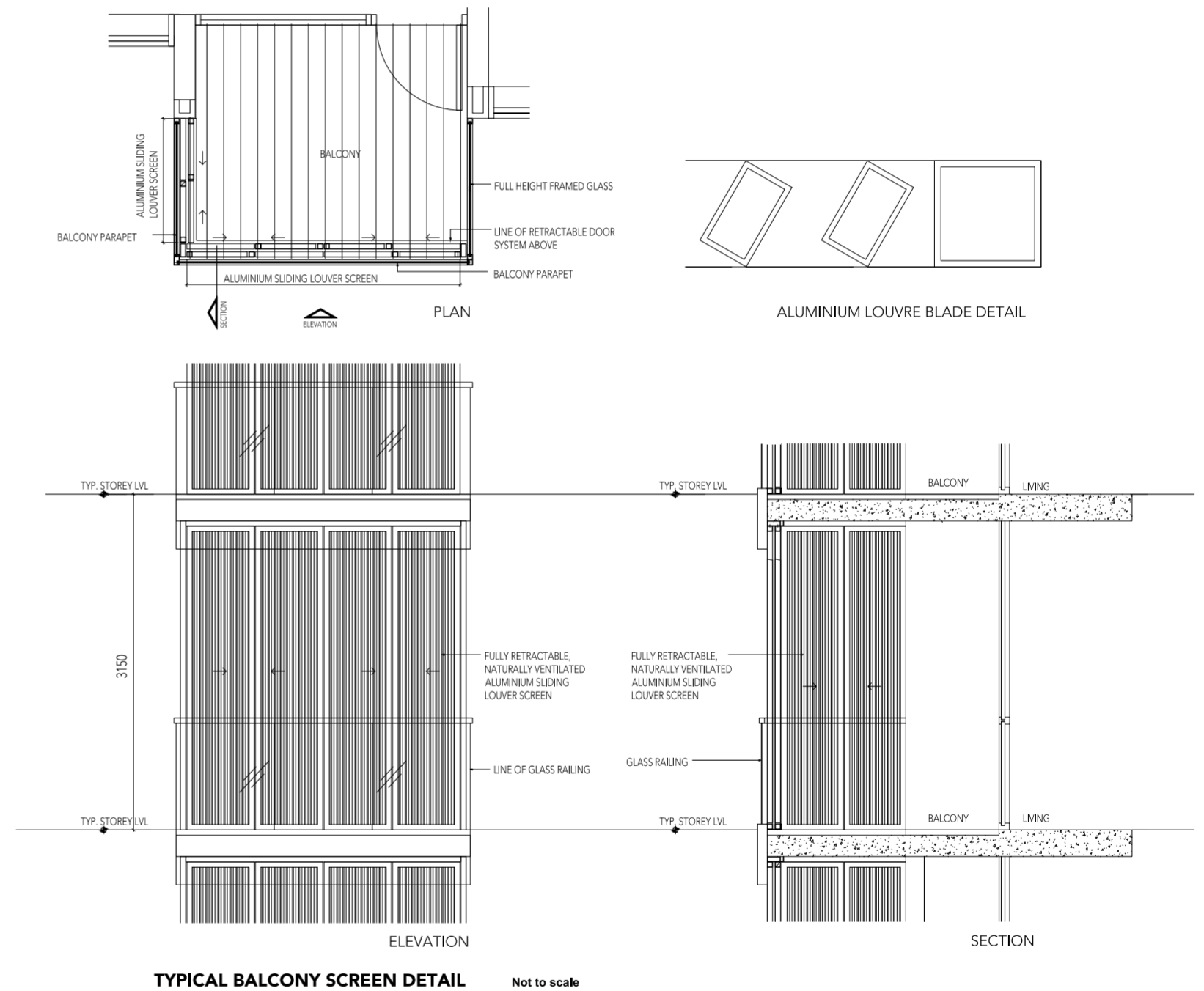
- #02-11 to #12-11
- #02-15 to #12-15
- #02-19 to #12-19
- #02-22 to #12-22*

* Mirror Unit



BALCONY SCREEN

The balcony shall not be enclosed unless with the approved balcony screen. For an illustration of the approved balcony screen, please see below:-



TYPICAL BALCONY SCREEN DETAIL Not to scale



The plans are subjected to change as may required or approved by the relevant authorities. Areas are estimates only and subject to final survey. Plans are not drawn to scale and do not form part of the contract.

*This drawing is for reference only. The screen design is provided for aesthetic uniformity of the development. Materials to be of aluminum with powder coated finish. Total free opening for screen shall not be less than 50% of the panel. Fixing detail by contractor, and fixing shall not damage waterproofing or existing structure. The installation and cost of the screen shall be borne by the Purchaser. The Purchaser shall verify all dimensions prior to commencement of work. Drawing not to scale, and none can be regarded as representation of fact. The Purchaser is required to refer to the Management for any additional details.



Far East Consortium International Limited has been listed on the Hong Kong Stock Exchange since 1972 (HKEx stock code: 00035). The Group is mainly engaged in property development and investment, hotel operations and management, car park operations and facilities management and gaming operations. The Group is well diversified across geographies with operations in Hong Kong, Mainland China, Australia, New Zealand, Malaysia, Singapore, the United Kingdom and other European countries. The Group follows a clear "Asian Wallet" strategy, aiming to benefit from the growth in consumption and investment from the expanding Asian middle-class.



KOH BROTHERS
DEVELOPMENT
PTE LTD

 A MEMBER OF KOH BROTHERS GROUP LIMITED



Established in 1993, Koh Brothers Development (KBD) provides quality property developments with specialised lifestyle themes at choice locations. Koh Brothers has managed to carve a niche in developing themed properties that are innovative and promote healthy lifestyle. Amongst its many successes, there is the 175-unit Lincoln Suites off Newton Road, the 53-unit Lumos development at Leonie Hill, Montana and Starville. Some of our recently completed development projects include the development of Singapore's first bike-themed Executive Condominium (EC) at Westwood Avenue, as well as the 486-unit Parc Olympia Condominium at Flora Drive. Current projects include Nonhyeon IPARK at Gangnam, South Korea.